

# HAZELHURST FARM



## CORPORATE RETREATS 2024



# WHAT TO EXPECT



The business we operate here at Hazelhurst Farm is essentially a way for us to share with you everything that we love about living in The New Forest.

We wanted our accommodation to feel like high-quality home-from-home and to give our guests the option of exclusive hire for added comfort and familiarity.

---

From our experience, the best of times are had when getting together with the people you love, in relaxed, beautiful surroundings.

Add to that great food and interesting activities and you're on to a winner.





# TAILORED TO SUIT

Indoors or outside, Hazelhurst Farm is the perfect backdrop for whatever you and your team have in mind.

We've had everything from yoga and wellness retreats, to banquets, birthday parties and barbecues. If you need any inspiration on how to make your retreat one to remember, we've worked with some fantastic local companies that we can recommend to help you tailor the perfect package.





# THE BARN

VIRTUAL TOUR









# FOOD & DRINK



Our accommodation and The Barn is hired on a self-catering basis, so you are welcome to BYOB and use the bar as well as cook meals in the cottages or the barn kitchen.

In addition to a conventional kitchen, The Barn has a fantastic wood-fired cooking set up, which is ideal for large groups and banquets.

---

Don't worry if cooking with fire, or indeed, cooking in general, is not your thing.

Our list of recommended providers has lots of chefs and caterers who will gladly provide you with a top-notch food and drink service.



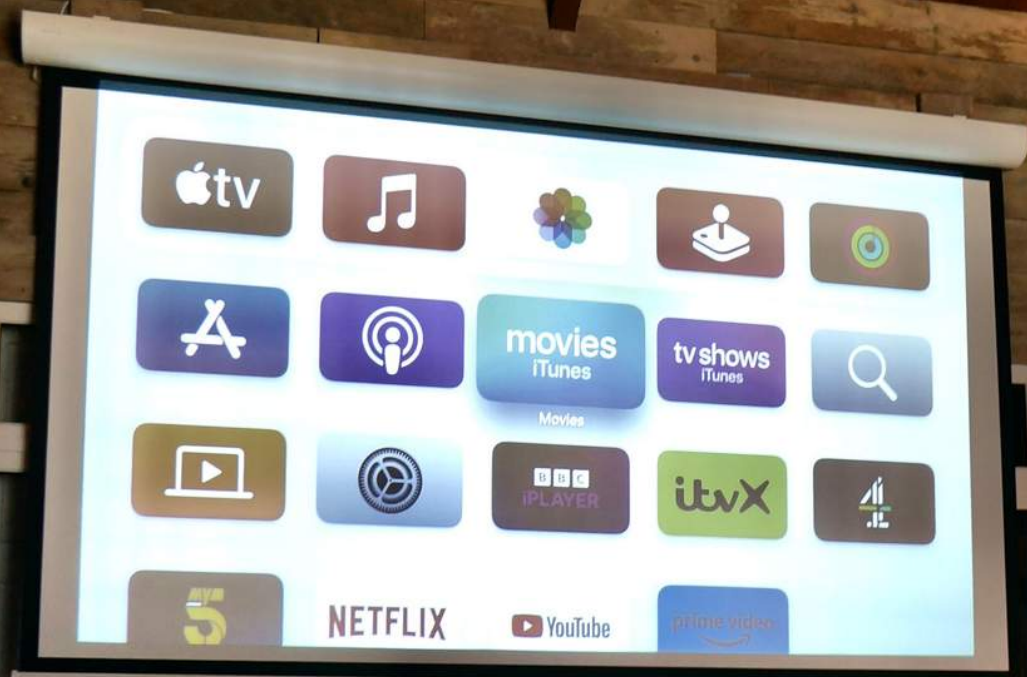




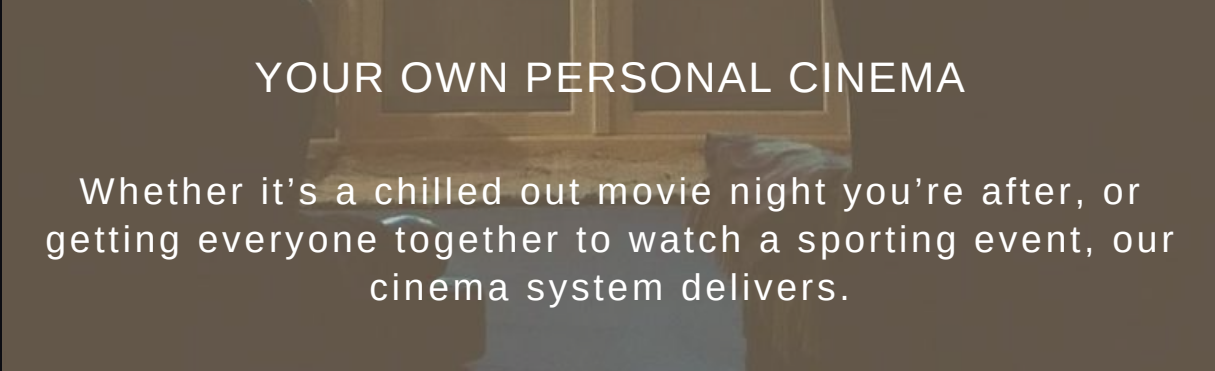


## TEAM MEETINGS

Share presentations and keep the team up to speed on all your latest projects. The Barn has high quality AV equipment to make workshops and seminars a breeze.





A dimly lit room with a large window and a sofa, serving as the background for the advertisement.

# YOUR OWN PERSONAL CINEMA

Whether it's a chilled out movie night you're after, or getting everyone together to watch a sporting event, our cinema system delivers.





## FACILITIES



Air conditioning and heating



Super-fast Starlink WIFI



Airplay audio/visual streaming with 120" motorised projector



Plenty of on-site parking and vehicular access to barn entrances



High quality sound system



Cubicled WCs



Equipped kitchen and wood-fired cooking



Tea & coffee making facilities



Fully adjustable Control4 lighting scenes



Commercial cocktail bar

SPACE FOR UP TO 30 GUESTS





# ACCOMMODATION

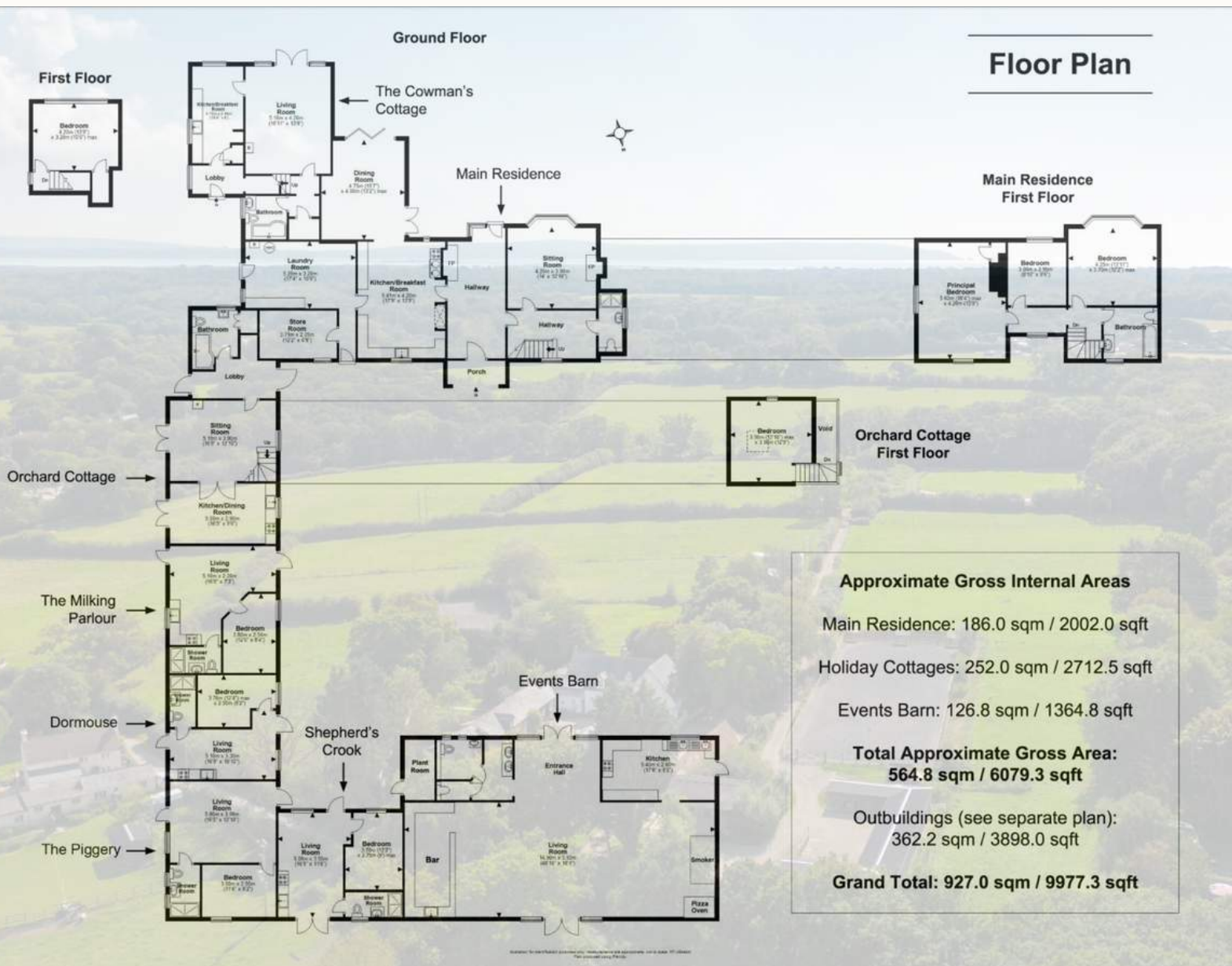
We have six individually crafted cottages on site, along with The Farmhouse. The accommodation is all linked around the courtyard and The Barn, giving guests their own private sanctuaries whilst making it easy for large groups to mingle.

Each property is self-contained and comes with a fully equipped kitchen and bathroom or shower room.  
With the exception of Shepherd's Crook, each also comes with its own private garden.





# LAYOUT

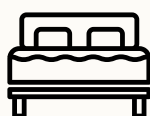




# SLEEPING

The six cottages are set up for 2-4 guests each and The Farmhouse has space for up to 8.

The accommodation can sleep a maximum of 30 guests across 22 individual beds.



	SINGLE	DOUBLE	KING	MAX GUESTS
DORMOUSE		1		2
SHEPHERD'S CROOK	2	1		4
THE PIGGERY	2	1		4
THE MILKING PARLOUR	2		1	4
ORCHARD COTTAGE	2		1	4
THE COWMAN'S COTTAGE	2		1	4
THE FARMHOUSE	4		2	8
TOTAL	14	3	5	30





# DORMOUSE



Small but crafty, Dormouse fits perfectly into a quirky space. Everything you need to make a lovely nest!

It may be the baby of the bunch, but Dormouse is the perfect hideaway just for two. One double bedroom, lounge/kitchen and shower room, plus garden.

[VIRTUAL TOUR](#)





# SHEPHERD'S CROOK



The former farmworker's tool store is now a cosy bolthole.

One double bedroom, shower room and lounge/kitchen with two pull-out singles.

Shepherd's Crook is perfect for two, but will cater for four.

[VIRTUAL TOUR](#)





# THE PIGGERY



No longer a sty! A dash of swinery finery has transformed the previous piggy parlour into a pretty little pad.

Also with a double bedroom and pull-out for two more guests in the lounge/kitchen.

The Piggery has its own private garden too.

[VIRTUAL TOUR](#)





# THE MILKING PARLOUR



The epicentre of the former dairy farm's production line is now the perfect place to relax 'til the cows come home.

One king size bedroom, shower room and a lounge/kitchen with pull-out for two additional guests. It also has its own garden and terrace.

[VIRTUAL TOUR](#)





# ORCHARD COTTAGE



With two bedrooms up the apples and pears, Orchard Cottage is perfect for four.

A cosy lounge with log burner, plus a spacious kitchen/diner. There's also a lovely garden with fruit trees and a large terrace.

A great space to enjoy a couple of drinks and hear the birdsong.

[VIRTUAL TOUR](#)





# THE COWMAN'S COTTAGE



A classic English farmworker's cottage with modern creature comforts.

A king-sized bedroom with solid four-poster overlooking the rolling pasture. Full bathroom, separate lounge with pull-out beds for two and a kitchen/breakfast room overlooking the large garden.

[VIRTUAL TOUR](#)





# THE FARMHOUSE



Our picture-book Victorian Farmhouse will sleep up to eight guests, with two large master bedrooms and four single bunks in the third.

At just over 1500sq ft The Farmhouse is roughly the size of The Cowman's Cottage and Orchard Cottage combined.

[VIRTUAL TOUR](#)





# AROUND THE FARM



Explore the beauty of nature around the farm. Whether you want to relax by a campfire on the meadow, or take a stroll around the grounds, you'll see an abundance of wildlife.

You're also likely to see our horses and sheep!

---

The meadow is a great spot to relax during summer months.

Guests are welcome to use the meadow for picnics, sunbathing, or even a spot of tennis on the full size court.









# YURT HIRE

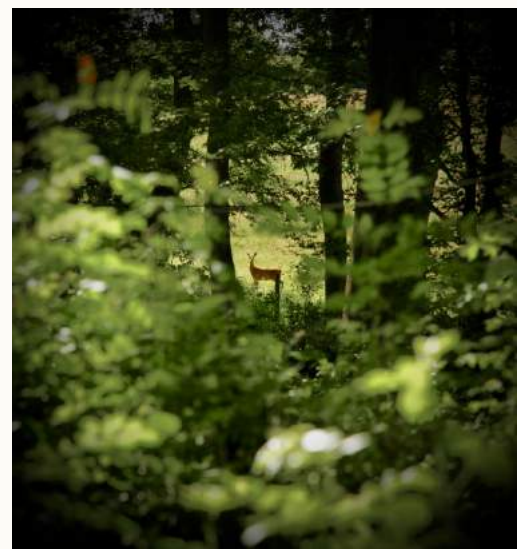


Our huge 34ft Yurt gives approximately 900sq ft of floor space, making it an amazing addition for summer gatherings, yoga classes or activity workshops.

The Yurt is available for corporate retreat clients to hire at £180 per day inc VAT.  
[During summer months only, subject to weather conditions].









# EXCLUSIVE HIRE PRICING

## 2024

PEAK SEASON	Website Price	Discount	Saving	New Price
2 nights mid-week	£ 3,540.00	5%	£ 177.00	£ 3,363.00
3 nights mid-week	£ 5,310.00	10%	£ 531.00	£ 4,779.00
4 nights mid-week	£ 7,080.00	15%	£ 1,062.00	£ 6,018.00
Fri+Sat	£ 4,660.00	5%	£ 233.00	£ 4,427.00
Fri+Sat+Sun	£ 6,430.00	10%	£ 643.00	£ 5,787.00
7 nights	£ 13,510.00	15%	£ 2,026.50	£ 11,483.50

LOW SEASON	Website Price	Discount	Saving	New Price
2 nights mid-week	£ 3,110.00	5%	£ 155.50	£ 2,954.50
3 nights mid-week	£ 4,665.00	10%	£ 466.50	£ 4,198.50
4 nights mid-week	£ 6,220.00	15%	£ 933.00	£ 5,287.00
Fri+Sat	£ 3,980.00	5%	£ 199.00	£ 3,781.00
Fri+Sat+Sun	£ 5,535.00	10%	£ 553.50	£ 4,981.50
7 nights	£ 11,755.00	15%	£ 1,763.25	£ 9,991.75

PRICES INCLUDE VAT AT 20%





# HAZELHURST FARM

## RECOMMENDED PROVIDERS



To craft the perfect experience, this list of recommended providers will help you choose everything from incredible food and drink, to activities and experiences that will make your stay with us truly memorable.



## GOOD 2 KNOW HOSPITALITY

Gino and the G2K team regularly provide our guests with everything from amazing party food, bar staff, cheese and wine tasting experiences or cocktail masterclasses with their skilled mixologists.

[CONTACT](#)



## CROSS FIRE COOKING

Matt Cross creates some of the best BBQ food around. Whether it's in The Barn or out on our meadow you're in for a treat. As well as catering, Matt runs BBQ courses at The Farm.

[CONTACT](#)



## THE TINKER'S GRANDDAUGHTER

Bobs at The Tinker's Granddaughter serves up amazing vegan street food from her food truck and also hosts private dining events and catering at The Farm, as well as her restaurant in Lymington.

[CONTACT](#)

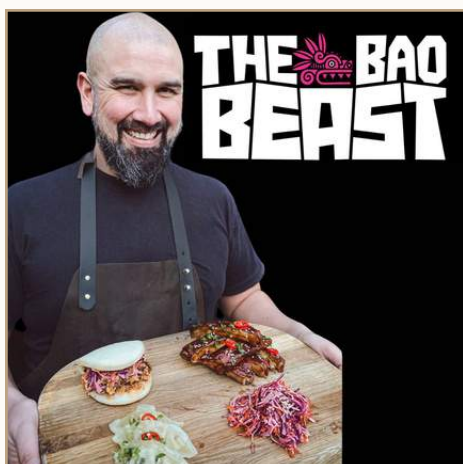




## CHEF GARY

Gary Ashley and his team are the perfect choice for banquets and fine dining experiences. Gary has hosted Farm Supper Clubs and Sunday lunches and is a firm favourite for special occasion meals.

[CONTACT](#)



## THE BAO BEAST

Husband and wife team David and Rachel offer incredible Asian fusion style street food, which is perfect for parties and events.

[CONTACT](#)

## THE TROUGH NEW FOREST

Jo and The Trough team are just a stone's throw from The Farm. They can provide superb sandwiches, cakes, afternoon tea packages and catering for just about any event.

[CONTACT](#)





## DIRTY DOG DORSET

Greg at Dirty Dog Dorset has an epic wood fired pizza trailer with a huge rotating wood oven that can crank out 8 pizzas at a time. Perfect for big groups! He also offers pizza making experiences as well as making charcuterie.

[CONTACT](#)



## CHOCOLATE BY MISS WITT

Multi-award winning chocolatier Kerry Witt offers incredible chocolate making workshops and experiences. Sample some exceptional chocolate and a fun group experience!

[CONTACT](#)

## JOSE SOUTO

Jose has run his hugely popular Deer Butchery Course here at The Farm. An unforgettable team experience and a feast to remember. Jose is a high-level chef and deer stalker, providing an amazing group education and culinary masterclass.

[CONTACT](#)



## COOMBE STABLES

One of the best ways to experience The New Forest is on horseback. Our neighbours at Coombe Stables offer guided group hacks on the forest for all abilities.

[CONTACT](#)



## NEW FOREST CYCLING TOURS

Steve offers fully guided group cycling tours of the forest. Meeting at The Farm and giving you the best routes and places to stop along the way. Steve can also provide bike hire if required.

[CONTACT](#)



## INSIGHT ACTIVITIES

Insight will come to the farm and set up a selection of amazing group activities, such as archery, axe throwing, bushcraft and crossbow shooting.

[CONTACT](#)





# CONTACT

[hello@hazelhurst.farm](mailto:hello@hazelhurst.farm)

[01590 683 591](tel:01590683591)

<https://hazelhurst.farm>

HAZELHURST FARM  
FLEXFORD LANE  
SWAY  
HAMPSHIRE  
SO41 6DN



# GETTING HERE

## BY TRAIN

Approximately 2 hours from London Waterloo by direct train. Sway station is just 6 minutes by car/taxi from Hazelhurst Farm at Flexford Lane SO41 6DN. It is a 30 minute walk from the station along Station Road and then South Sway Lane, leading to Flexford Lane.

---

## BY CAR

From M27, exit at Cadnam and take A337 through Lyndhurst toward Brockenhurst. Then take B3055 via Grigg Lane opposite Carey's Manor and continue along B3055 along Birchy Hill before turning left into South Sway Lane. Continue on South Sway Lane for 1.2 miles and turn right into Flexford Lane. You will see a green painted sign with white writing for Hazelhurst Farm at our entrance. Enter via the main gate by the barn. Cottage parking bays are immediately left of the entrance gate.

